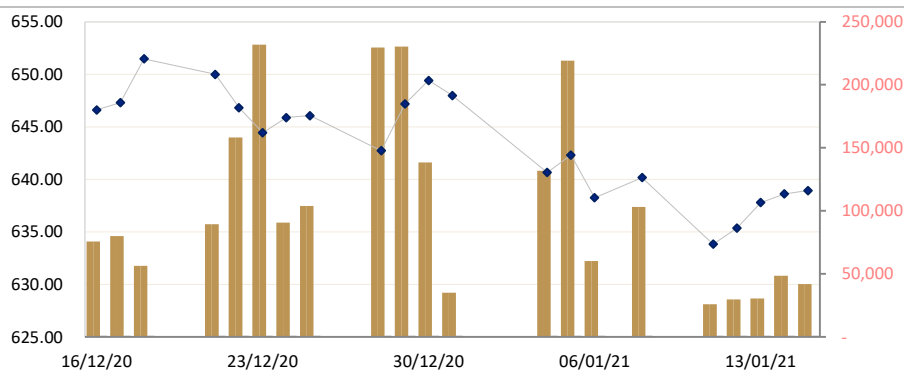




CAMBODIA SECURITIES EXCHANGE: MARKET SUMMARY

Index / Companies	Previous Day	Open	Closing	Change	% Change	From Listed till Today		Volume	Value (KHR)
						High	Low		
Index	638.61	640.73	638.94	0.33	▲0.05	1,108	305	41,868	134,178,550
PPWSA	6,200	6,200	6,180	-20.	▼0.32	10,300	2,700	468	2,897,600
GTI	3,400	3,500	3,400	0	0.00	9,780	2,110	375	1,279,800
PPAP	11,500	11,800	11,700	200.	▲1.74	13,380	4,600	296	3,448,100
PPSP	1,290	1,380	1,350	60.	▲4.65	3,650	1,120	34,993	47,410,230
PAS	14,000	14,000	13,800	-200.	▼1.43	23,800	4,620	2,454	48,777,900
ABC	16,780	16,620	16,800	20.	▲0.12	23,600	16,180	2,582	43,235,800
PEPC	2,810	2,900	2,900	90.	▲3.20	3,990	2,710	700	48,777,900

CSX DAILY STOCK INDEX (Last 30 Days)



LISTED COMPANIES

PPWSA	Phnom Penh Water Supply Authority
Industry	Water Utility
GTI	Grant Twins Int. (Cambodia) Plc.
Industry	Apparel Clothing
PPAP	Phnom Penh Autonomous Port.
Industry	Port Services
PPSP	Phnom Penh SEZ PLC.
Industry	SEZ Developer
PAS	Sihanouk Ville Autonomous Port.
Industry	Port Services
ABC	ACLEDA Bank
Industry	Financial
PEPC	PESTECH Cambodia
Industry	Electricity

SECURITIES NEWS

CAMBODIA : Market Watch

By market close yesterday GTI had gained roughly 9.4 percent – 310 riels to land at 3,600 riels per share. Three other stocks, PWSA, PPSP and PEPC, also saw increases, rising to 6,100 riels, 1,170 riels and 2,800 riels per share respectively. PPAP dropped by 80 riels to 11,700 riels per share. PAS and ABC held steady at 13,900 riels and 16,700 riels respectively. The CSX index recovered slightly over the day, closing at 635.37 points, a gain of 0.24 percent. The total trading value on Monday was 146,859,890 riels. (Khmer Time New)

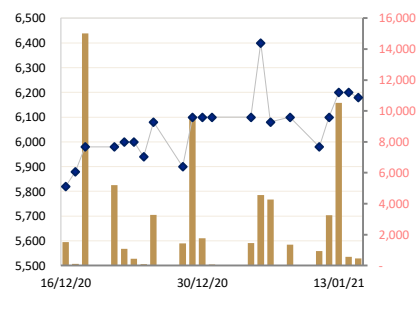
CAMBODIA : ACLEDA Securities Plc continues its winning streak

ACLEDA Securities Plc has been honoured as the nation's best securities brokerage during the fourth quarter of 2020 by the Cambodia Securities Exchange (CSX). This is the fifth quarterly nod as best securities firm for ACLEDA Securities. It received the highest scores of the 10 securities brokerages based on a comprehensive review weighed on three criteria: the total trading value of a brokerages' investors, the number of new trading accounts and its usage of the exchange's Mobile Trading System (MTS). In the fourth quarter of 2020, the firm's investors held 19.57 billion riels (\$4.83million) in securities. This amount accounted for approximately 48 percent of the exchange's total securities' trading value. Additionally, approximately 78 percent of new trading accounts opened during the quarter were held by ACLEDA Securities customers. The firm also placed 19.43 billion riels (\$4.79 million) of trades through the MTS. New ACLEDA customer MTS accounts accounted for roughly 64 percent of those opened in the quarter. CSX's Vice-Chairman Ha Jong-Weon said the quarterly best securities brokerage award programme acknowledges the securities brokerage company that best provided service in the intermediation of investors' trades. (Khmer Time New)

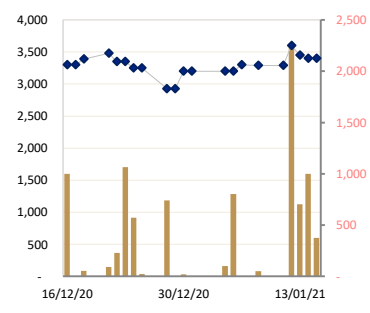
CAMBODIA : Asian stocks mixed over US unrest, vaccine and stimulus

AFP – Asian markets fluctuated yesterday as hopes for the rollout of Coronavirus vaccines and a new stimulus out of Washington DC competed with fears over surging infections, new lockdowns and brewing political and social unrest in the United States. While analysts' long-

PPWSA DAILY STOCK PRICE



GTI DAILY STOCK PRICE



term outlook remained positive as more people are inoculated and life returns to normal, frighteningly high new case numbers and deaths around the world – and the resulting lockdowns – kept a cap on buying. Germany's BioNTech provided some good news because it said it expected to produce 2 billion doses of its vaccine this year, up from the previous forecast of 1.3 billion, lifting hopes that more people could get the jab earlier. That came as seven mass vaccination sites were opened across England, where a new strain of the disease is putting huge pressure on the country's National Health Service and forced leaders to ramp up economically painful containment measures. The main focus of attention for traders is Washington, where Democrats are pushing ahead with a historic second impeachment of Donald Trump as they accuse him of inciting last Wednesday's storming of the Capitol Building that delayed lawmakers' certification of Joe Biden's election win. (*Khmer Time New*)

BUSINESS & ECONOMIC NEWS

CAMBODIA : Chinese White Paper lists Cambodian investments

Cambodia featured heavily in China's newly released "International Development and Cooperation in the New Era" document. In its lengthiest White Paper on foreign investments, the Chinese State Council Information Office document outlined investments made in key sectors of Cambodia's economy, most notably in road and air transportation, energy, agricultural and healthcare. While lacking figures and specific projects for the Kingdom, the White Paper reported a total of \$41,773,595,500 had been allocated globally via grants, interest-free loans and concessional loans. Concessional loans accounted for 48.52 percent of Chinese foreign investments, according to the document, while another 47.3 percent were issued as grants and the remaining 4.18 percent was issued in the form of interest-free loans. China has remained the Kingdom's leading bilateral development partner since 2010. The Ministry of Economy and Finance (MEF) 2018 Budget in Brief reported that China has contributed some \$5.8 billion in development assistance to Cambodia – with more than half of the projects involving transportation and energy infrastructure. According to the MEF, some 48 percent of Chinese loans were offered through interest-free and concessional loans as of 2018. (*Khmer Time New*)

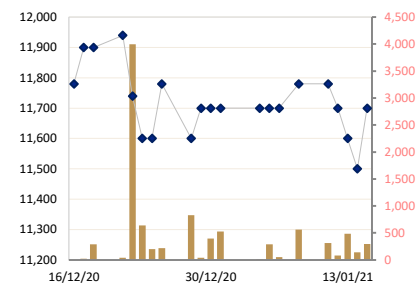
CAMBODIA : Rubber production to receive multi-agency effort to improve

WWF-Cambodia and the General Department of Rubber at the Ministry of Agriculture, Forestry and Fisheries (MAFF) signed a memorandum of understanding (MoU) to build a multi-agency partnership for transparent and sustainable natural rubber supply chains in Cambodia. Funded by the German government's Federal Ministry for Economic Cooperation and Development (BMZ) through Welthungerhilfe, one of Germany's biggest nonprofit organisations for global development and humanitarian aid and German World Hunger Aid, the multi-actor partnership cooperation has been implemented in other countries in Southeast Asia, including Thailand and Myanmar. The three-year cooperation in Cambodia has engaged and worked with relevant key actors from the government, private sector, nongovernmental organisations (NGOs) and rubber smallholders in Mondulkiri to promote sustainable rubber production, contributing to the improvement of the rubber smallholders' indigenous people and workers' livelihoods. Seng Teak, country director of WWF-Cambodia, said promoting the sustainable and responsible smallholder rubber plantations through the application of best management practices in Cambodia will not only create jobs and incomes for the local communities, but it will also help to reduce pressures on natural resources by optimal use of existing rubber plantation land and prevent illegal forest land encroachment. (*Khmer Time New*)

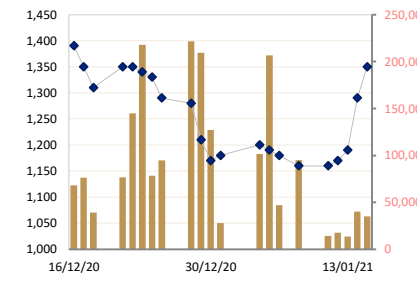
CAMBODIA : NBC governor wins award

National Bank of Cambodia (NBC) governor Chea Chanto won Central Banker of the Year, Asia-Pacific award from premier financial magazine *The Banker* for his leadership in successfully navigating through a stormy 2020 during the Covid-19 crisis. The periodical, owned by London-based Financial Times Group, said the Kingdom managed the health crisis created by the coronavirus well, with fewer than 400 cases confirmed and zero deaths recorded to date. The Banker said: "Despite these conditions, Cambodia is forecast to see [minus] 1.9 per cent growth in gross domestic product [GDP] during 2020 ... remarkable considering the hardships the country has faced. "Following the impact Covid-19 and flooding have had on businesses, the central bank stepped up to help out companies experiencing financial hardship. "The NBC informed the Association of Banks in Cambodia and the Cambodia Microfinance Association [CMA] that loan restructuring measures introduced in March 2020 will continue until the end of June 2021. "Restructuring is permitted up to three times without any impact to the loan classification during the extension period. Further provisions include the reduction of interest rates and waiving fees. The measures taken mean the country's rate of non-performing loans has remained low at around 2.5 per cent." According to the CMA, as of the end of November, more than 290,000 clients affected by Covid-19 had applied for credit restructuring from the

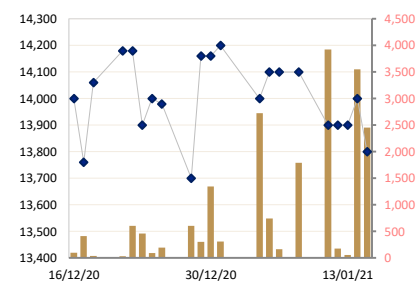
PPAP DAILY STOCK PRICE



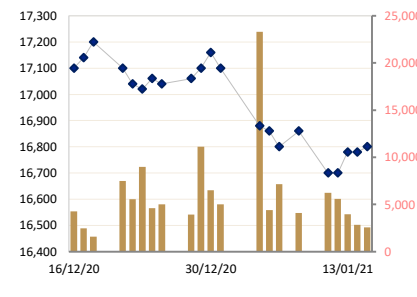
PPSP DAILY STOCK PRICE



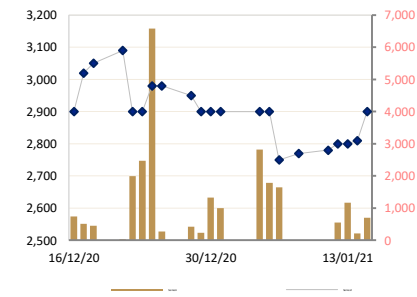
PAS DAILY STOCK PRICE



ABC DAILY STOCK PRICE



PEPC DAILY STOCK PRICE



association's 103 member microfinance institutions (MFIs). More than 270,000 of these clients have been approved by their MFI to restructure loans collectively totalling more than \$1.3 billion. (*Phnom Penh Post*)

CAMBODIA : Meridian International Holding and Thalias Hospitality Group form partnership

Meridian International Holding and Thalias Hospitality Group kicked off the new year by announcing their strategic partnership. The fruit of this collaboration is a seamless dining experience, which will be a showpiece at the Flatiron by Meridian. Flatiron by Meridian will be the perfect place to indulge in a vast array of culinary choices, as Thalias Hospitality Group will be the sole provider of a holistic dining experience to all consumers in this development. The food and beverage establishments offered in Flatiron by Meridian by the Group promise to provide consumers with a plethora of dining options and excellent service. Several celebrated brands under the Group will be housed in Flatiron by Meridian, such as the all-time favourite Khéma, famous for its free-flow offerings, as well as Khéma Go, which will offer a range of bakery, viennoiseries, savouries and beverages. The Group has also created the Siena Restaurant & Wine Bar – a new restaurant concept that is set to debut in this landmark development in Phnom Penh City Centre. (*Phnom Penh Post*)

CAMBODIA : Two power plants in Kandal start their engines

The heavy fuel oil-fired power plants in Kandal province's Lvea Em district have started their engines and are generating power to the national grid, according to the Ministry of Mines and Energy. The engines of the combined 400-megawatt power plants started power generation earlier this month, said Victor Jona, director-general of Energy at the Ministry of Mines and Energy. "The plants have started power generation already, but they are not yet at their full capacity of 400 megawatts," Jona said. The construction of the power project started in October 2019. It is composed of two plants. One is powered by a 200mW generator made by the Finnish firm Wartsila. That plant was developed by Chinese firm CGGC-UN Power Co. The second plant also uses a 200mW generator, one made by Germany's Man Group. It was built by China National Heavy Machinery Corp (CHMC). The project is projected to cost \$380 million, with \$300 million loaned by the government and the remainder coming from EDC's own coffers. The government approved the power plants after Phnom Penh suffered blackouts in the dry season last year. The construction of the power plants started in October 2019. (*Khmer Time New*)

CAMBODIA : Cambodia readies for EU meet on 7-year work plan

The Kingdom is set to host a consultative meeting with EU representatives and partners based in the country next month and prepare a 2021-2027 joint development cooperation plan that centres on market diversification, according to the Council for the Development of Cambodia (CDC). The remark was made at a January 11 meeting between the CDC's Cambodian Rehabilitation and Development Board (CRDB) secretary-general Chheang Yanara and EU delegation to Cambodia's head of cooperation Franck Viault, the CDC said in a statement. During the meeting, the two sides discussed preparations for next month's consultative meeting, which will address the drafts of the Joint European Development Cooperation Strategy for Cambodia for 2021-2027 and the EU's next Multiannual Financial Framework 2021-2027. According to the CDC, the joint strategic plan was agreed in principle by both sides, which they determined would effectively diversify the economy and promote the private sector, sustainable development work and human resources development. The two sides will focus on "priority areas" of the financial framework, including the economy and employment, governance, education and vocational training. They are to each prepare a draft by the end of this month and collect feedback and suggestions to present at February's consultative meeting. (*Phnom Penh Post*)

KOREA : South Korea to inject \$27.35B into green energy exports

Seeking to boost a green-led economic recovery in the post-pandemic era, South Korea's government vowed on January 13 to spend 30 trillion won (\$27.35 billion) to support local exports of renewable energy and other clean technologies. Deputy Prime Minister and finance minister Hong Nam-ki told a meeting of economy-related ministers: "South Korea should take a lead in the global market for green and digital businesses by embracing the ongoing paradigm shift to a green and digital economy triggered by the Covid-19 pandemic. "[The government] will make all-out efforts to help renewable energy companies expand their overseas contracts of green energy products to 30GW from the current 15GW. To do so, the authorities are planning to operate export financing programme worth 30 trillion won in phases over the next five years." In addition, Hong pledged to launch a series of state-run export insurance programmes targeting domestic renewable energy providers, while reducing the length of time taken by the finance ministry's in its evaluation process. The ministry hopes that expediting

the evaluations, which assess the feasibility of local companies’ new overseas projects, will speed up their business activities in the global market. The envisioned plans were designed to promote the Moon Jae-in administration’s “Korean New Deal” initiative, centred on two pillars – the Green New Deal and Digital New Deal – which aims to promote green growth initiatives as well as digital transformation across industries. (*Phnom Penh Post*)

Historical Trading Data (Latest Month)

	Date	Index/Stock	Open	High	Low	Close	Change	Δ (%)	Volume	Value (mil. KHR)	Value (\$)*	Mar. Cap. (mil. KHR)	Remain Quantity	
													Sell	Buy
15/01/21		Index	640.73	640.73	637.17	638.94	0.33	▲0.05%	41,868	134,178,550	33,545	9,690,665	80,534	73,093
		PPWSA	6,200	6,200	6,180	6,180	-20.00	▼0.32%	468	2,897,600	724.40	537,494	22,045	3,026
		GTI	3,500	3,500	3,400	3,400	0.00	0.00%	375	1,279,800	319.95	136,000	2,326	1,810
		PPAP	11,800	11,800	11,600	11,700	200.00	▲1.73%	296	3,448,100	862.03	242,007	4,581	4,337
		PPSP	1,380	1,380	1,300	1,350	60.00	▲4.65%	34,993	47,410,230	11,852.56	97,031	35,956	51,291
		PAS	14,000	14,080	13,800	13,800	-200.00	▼1.42%	2,454	33,931,920	8,482.98	1,183,653	6,189	2,649
		ABC	16,620	16,800	16,620	16,800	20.00	▲0.11%	2,582	43,235,800	10,808.95	7,277,139	7,118	5,585
14/01/21		PEPC	2,900	2,900	2,810	2,900	90.00	▲3.20%	700	1,975,100	493.78	217,341	2,319	4,395
		Index	637.79	640.30	634.38	638.61	0.82	▲0.13%	48,442	154,481,670	38,620	9,685,701	77,707	104,653
		PPWSA	6,200	6,220	6,200	6,200	0.00	0.00%	565	3,506,300	876.58	539,234	23,954	2,411
		GTI	3,400	3,400	3,400	3,400	-50.00	▼1.44%	1,000	3,400,000	850.00	136,000	7,194	2,800
		PPAP	11,500	11,600	11,500	11,500	-100.00	▼0.86%	142	1,635,000	408.75	237,870	4,511	4,313
		PPSP	1,200	1,290	1,190	1,290	100.00	▲8.40%	40,129	48,848,240	12,212.06	92,719	17,829	85,560
		PAS	14,020	14,020	13,700	14,000	100.00	▲0.71%	3,546	48,777,900	12,194.48	1,200,808	6,192	3,465
13/01/21		ABC	16,840	16,840	16,700	16,780	0.00	0.00%	2,851	47,727,880	11,931.97	7,268,475	10,937	3,282
		PEPC	2,800	2,810	2,800	2,810	10.00	▲0.35%	209	586,350	146.59	210,595	7,090	2,822
		Index	635.37	637.79	634.88	637.79	2.42	▲0.38%	30,491	160,558,030	40,140	9,673,255	111,223	118,710
		PPWSA	6,000	6,300	6,000	6,200	100.00	▲1.63%	10,514	66,053,200	16,513.30	539,234	20,133	1,994
		GTI	3,500	3,500	3,250	3,450	-150.00	▼4.16%	704	2,363,000	590.75	138,000	11,135	2,292
		PPAP	11,600	11,600	11,600	11,600	-100.00	▼0.85%	485	5,626,000	1,406.50	239,939	5,695	1,204
		PPSP	1,170	1,190	1,160	1,190	20.00	▲1.70%	13,588	16,010,370	4,002.59	85,531	50,515	104,137
12/01/21		PAS	13,900	13,900	13,900	13,900	0.00	0.00%	55	764,500	191.13	1,192,230	4,951	2,819
		ABC	16,720	16,780	16,700	16,780	80.00	▲0.47%	3,975	66,464,960	16,616.24	7,268,475	10,325	2,873
		PEPC	2,800	2,800	2,800	2,800	0.00	0.00%	1,170	3,276,000	819.00	209,846	8,469	3,391
		Index	633.83	638.23	633.72	635.37	1.54	▲0.24%	29,602	146,859,890	36,715	9,636,536	124,034	142,658
		PPWSA	6,100	6,100	6,080	6,100	120.00	▲2.00%	3,255	19,847,500	4,961.88	530,536	32,581	3,720
		GTI	3,250	3,600	3,250	3,600	310.00	▲9.42%	2,276	7,993,300	1,998.33	144,000	546	2,579
		PPAP	11,700	11,700	11,700	11,700	-80.00	▼0.67%	80	936,000	234.00	242,007	6,077	1,427
11/01/21		PPSP	1,160	1,170	1,150	1,170	10.00	▲0.86%	17,660	20,478,930	5,119.73	84,094	58,805	114,761
		PAS	13,900	13,900	13,900	13,900	0.00	0.00%	180	2,502,000	625.50	1,192,230	5,205	2,742
		ABC	16,700	16,800	16,700	16,700	0.00	0.00%	5,595	93,545,360	23,386.34	7,233,822	14,455	13,257
		PEPC	2,800	2,800	2,800	2,800	20.00	▲0.71%	556	1,556,800	389.20	209,846	6,365	4,172
		Index	639.13	640.17	632.78	633.83	-6.34	▼0.99%	25,800	184,073,760	46,018	9,613,136	112,044	112,359
		PPWSA	5,920	6,100	5,920	5,980	-120.00	▼1.96%	950	5,683,320	1,420.83	520,100	37,522	2,830
		GTI	3,290	3,290	3,290	3,290	0.00	0.00%	0	0	0.00	131,600	2,143	302
08/01/21		PPAP	11,700	11,780	11,700	11,780	0.00	0.00%	310	3,635,800	908.95	243,662	3,525	336
		PPSP	1,160	1,160	1,120	1,160	0.00	0.00%	14,386	16,666,920	4,166.73	83,375	5,277	4,571
		PAS	13,900	13,900	13,500	13,900	-200.00	▼1.41%	3,922	53,580,580	13,395.15	1,192,230	49,547	97,534
		ABC	16,860	16,860	16,700	16,700	-160.00	▼0.94%	6,232	104,507,140	26,126.79	7,233,822	4,197	3,209
		PEPC	2,780	2,780	2,780	2,780	10.00	▲0.36%	0	0	0.00	208,347	9,833	3,577
		Index	638.25	640.35	636.11	640.17	1.92	▲0.30%	102,985	216,446,470	54,112	9,709,284	190,446	111,446
		PPWSA	6,100	6,100	6,000	6,100	20.00	▲0.32%	1,348	8,182,360	2,045.59	530,536	50,787	1,595
06/01/21		GTI	3,290	3,290	3,290	3,290	-10.00	▼0.30%	50	164,500	41.13	131,600	3,672	65
		PPAP	11,580	11,780	11,580	11,780	80.00	▲0.68%	563	6,531,740	1,632.94	243,662	3,602	4,096
		PPSP	1,180	1,180	1,120	1,160	-20.00	▼1.69%	95,149	107,675,510	26,918.88	83,375	107,053	91,922
		PAS	13,800	14,100	13,800	14,100	0.00	0.00%	1,789	25,076,700	6,269.18	1,209,385	6,098	1,913
		ABC	16,960	16,960	16,820	16,860	60.00	▲0.35%	4,086	68,815,660	17,203.92	7,303,129	11,095	6,369
		PEPC	2,770	2,770	2,770	2,770	20.00	▲0.72%	0	0	0.00	207,598	8,139	5,486
		Index	642.32	642.32	637.94	638.25	-4.07	▼0.63%	60,271	208,015,530	52,004	9,680,239	176,384	113,161
05/01/21		PPWSA	6,100	6,100	6,000	6,080	-320.00	▼5.00%	4,276	25,992,040	6,498.01	528,797	50,258	854
		GTI	3,300	3,300	3,300	3,300	100.00	▲3.12%	1	3,300	0.83	132,000	1,390	145
		PPAP	11,700	11,700	11,700	11,700	0.00	0.00%	51	596,700	149.18	242,007	3,648	533
		PPSP	1,190	1,190	1,140	1,180	-10.00	▼0.84%	46,987	54,295,970	13,573.99	84,813	87,785	101,072
		PAS	14,100	14,100	14,100	14,100	0.00	0.00%	163	2,298,300	574.58	1,209,385	6,777	3,620
		ABC	16,860	16,860	16,800	16,800	-60.00	▼0.35%	7,148	120,257,720	30,064.43	7,277,139	19,177	3,278
		PEPC	2,900	2,900	2,750	2,750	-150.00	▼5.17%	1,645	4,571,500	1,142.88	206,099	7,349	3,659
04/01/21		Index	644.08	645.26	638.96	642.32	1.66	▲0.26%	219,292	363,535,550	90,884	9,742,020	183,485	85,010
		PPWSA	6,100	6,400	6,000	6,400	300.00	▲4.91%	4,560	28,058,980	7,014.75	556,628	20,077	8,736
		GTI	3,300	3,300	3,200	3,200	0.00	0.00%	803	2,602,900	650.73	128,000	6,469	2,080
		PPAP	11,700	11,780	11,700	11,700	0.00	0.00%	286	3,347,000	836.75	242,007	3,700	1,084
		PPSP	1,200	1,220	1,150	1,190	-10.00	▼0.83%	206,709	239,331,470	59,832.87	85,531	111,917	48,467
		PAS	14,200	14,200	14,000	14,100	100.00	▲0.71%	743	10,501,500	2,625.38	1,209,385	7,354	3,279
		ABC	17,000	0	16,820	16,860	-20.00	▼0.11%	4,405	74,526,300	18,631.58	7,303,129	28,353	17,594
31/12/20		PEPC	2,860	2,900	2,860	2,900	0.00	0.00%	1,786	5,167,400	1,291.85	217,341	5,615	3,770
		Index	646.09	648.90	637.43	640.66	-7.32	▼1.13%	131,786	571,198,220	142,800	9,716,733	86,358	138,989
		PPWSA	6,200	6,200	6,080	6,100	0.00	0.00%	1,461	8,909,800	2,227.45	530,536	11,104	1,163
		GTI	3,520	3,520	3,290	3,200	0.00	0.00%	101	329,760	82.44	128,000	3,371	2,446
		PPAP	11,700	11,700	11,700	11,700	0.00	0.00%	12	140,400	35.10	242,007	3,483	326
		PPSP	1,220	1,240	1,180	1,200	20.00	▲1.69%	101,371	121,525,410	30,381.35	86,250	39,450	116,433
		PAS	14,000	14,000	13,800	14,000	-200.00	▼1.40%	2,721	38,039,240	9,509.81	1,200,808	5,472	1,754
30/12/20		ABC	17,100	17,180	16,800	16,880	-220.00	▼1.28%	23,305	394,194,020	98,548.51	7,311,792	18,226	14,496
		PEPC	2,900	3,000	2,710	2,900	0.00	0.00%	2,815	8,059,590	2,014.90	217,341	5,252	2,371
		Index	649.32	649.46	647.70	647.98	-1.44	▼0.22%	34,949	132,344,500	33,086	9,807,161	110,057	254,995
		PPWSA	6,100	6,100	6,100	6,100	0.00	0.00%	67	408,700	102.18	530,536	30,030	16,511
		GTI	3,200	3,200	3,200	3,200	0.00	0.00%	0	0	0.00	128,000	2,467	1,496
		PPAP	11,700	11,700	11,500	11,700	0.00	0.00%	526	6,055,000	1,513.75	242,007	3,689	1,427
		PPSP	1,150	1,180	1,150	1,180	10.00	▲0.85%	28,043	33,017,820	8,254.46	84,813	42,831	2

	PPWSA	6,200	6,200	6,100	6,100	0.00	0.00%	1,760	10,801,200	2,700.30	530,536	28,629	15,924
	GTI	3,200	3,200	3,200	3,200	270.00	▲9.21%	20	64,000	16.00	128,000	722	2,338
	PPAP	11,700	11,700	11,500	11,700	0.00	0.00%	396	4,620,800	1,155.20	242,007	3,588	170
	PPSP	1,210	1,220	1,150	1,170	-40.00	▼0.00%	126,956	147,305,290	36,826.32	84,094	115,303	108,117
	PAS	14,000	14,160	14,000	14,160	0.00	0.00%	1,344	18,998,800	4,749.70	1,214,531	7,290	511
	ABC	17,240	17,240	17,100	17,160	60.00	▲0.35%	6,498	111,271,880	27,817.97	7,433,077	20,168	20,384
	PEPC	2,950	2,950	2,900	2,900	0.00	0.00%	1,330	3,860,500	965.13	217,341	5,733	2,173
29/12/20	Index	646.78	647.18	641.02	647.18	4.45	▲0.69%	230,293	505,141,740	126,285	9,815,671	156,106	240,653
	PPWSA	6,000	6,100	6,000	6,100	200.00	▲3.38%	9,457	56,772,560	14,193.14	530,536	5,718	14,837
	GTI	2,930	2,930	2,930	2,930	0.00	0.00%	0	0	0.00	117,200	20	615
	PPAP	11,700	11,700	11,700	11,700	100.00	▲0.86%	40	468,000	117.00	242,007	3,984	1,485
	PPSP	1,280	1,280	1,200	1,210	-70.00	▼5.46%	209,147	253,748,880	63,437.22	86,969	117,012	194,478
	PAS	14,160	14,160	13,900	14,160	460.00	▲3.35%	301	4,217,700	1,054.43	1,214,531	5,089	2,271
	ABC	17,200	17,200	16,980	17,100	40.00	▲0.23%	11,118	189,260,100	47,315.03	7,407,088	10,334	24,804
28/12/20	PEPC	2,960	2,960	2,900	2,900	-50.00	▼1.69%	230	674,500	168.63	217,341	13,949	2,163
	Index	646.06	647.78	640.92	642.73	-3.33	▼0.52%	229,683	376,269,340	94,067	9,748,205	124,752	92,525
	PPWSA	5,900	5,900	5,900	5,900	-180.00	▼2.96%	1,431	8,442,900	2,110.73	513,142	10,754	10,543
	GTI	3,250	3,490	2,930	2,930	-320.00	▼9.84%	742	2,209,220	552.31	117,200	2,252	1,628
	PPAP	11,780	11,780	11,480	11,600	-180.00	▼1.52%	830	9,576,560	2,394.14	239,939	623	1,446
	PPSP	1,290	1,310	1,250	1,280	-10.00	▼0.77%	221,728	279,595,680	69,898.92	92,000	78,676	68,929
	PAS	14,200	14,200	13,700	13,700	-280.00	▼2.00%	603	8,318,260	2,079.57	1,175,076	7,483	2,174
25/12/20	ABC	17,100	17,100	17,000	17,060	20.00	▲0.11%	3,930	66,896,640	16,724.16	7,389,761	10,977	3,927
	PEPC	2,980	2,980	2,900	2,950	-30.00	▼1.00%	419	1,230,080	307.52	221,088	13,987	3,878
	Index	646.34	650.00	644.69	646.06	0.17	▲0.03%	103,817	232,753,460	58,188	9,798,703	142,500	126,499
	PPWSA	6,100	6,100	5,900	6,080	140.00	▲2.35%	3,277	19,392,840	4,848.21	528,797	28,095	7,712
	GTI	3,350	3,350	3,250	3,250	0.00	0.00%	23	76,850	19.21	130,000	4,669	1,418
	PPAP	11,700	11,780	11,580	11,780	180.00	▲1.55%	217	2,536,220	634.06	243,662	3,054	3,882
	PPSP	1,330	1,330	1,270	1,290	-40.00	▼3.00%	94,839	122,063,570	30,515.89	92,719	75,762	103,259
24/12/20	PAS	14,180	14,180	13,980	13,980	-20.00	▼0.14%	194	2,715,800	678.95	1,199,092	5,666	2,417
	ABC	17,120	17,120	17,000	17,040	-20.00	▼0.11%	4,995	85,156,120	21,289.03	7,381,098	13,914	5,027
	PEPC	2,990	2,990	2,970	2,980	0.00	0.00%	272	812,060	203.02	223,336	11,340	2,784
	Index	644.49	648.30	641.98	645.89	1.45	▲0.23%	90,581	206,585,190	51,646	9,796,058	148,149	86,927
	PPWSA	5,640	6,100	5,640	5,940	-60.00	▼1.00%	99	589,200	147.30	516,621	29,065	8,677
	GTI	3,340	3,340	3,250	3,250	-100.00	▼2.98%	573	1,884,660	471.17	130,000	5,331	1,256
	PPAP	11,560	11,600	11,560	11,600	0.00	0.00%	197	2,280,760	570.19	239,939	5,536	3,800
23/12/20	PPSP	1,350	1,350	1,290	1,330	-10.00	▼0.74%	78,443	102,509,850	25,627.46	95,594	79,298	61,611
	PAS	14,100	14,100	13,920	14,000	100.00	▲0.71%	96	1,339,940	334.99	1,200,808	6,476	3,262
	ABC	17,020	17,100	17,020	17,060	40.00	▲0.23%	4,593	78,384,780	19,596.20	7,389,761	12,419	4,487
	PEPC	2,850	3,000	2,850	2,980	80.00	▲2.75%	6,580	19,596,000	4,899.00	223,336	10,024	3,834
	Index	646.86	648.26	644.44	644.44	-2.39	▼0.37%	231,803	470,064,610	117,516	9,774,096	136,187	57,566
	PPWSA	6,100	6,100	6,000	6,000	0.00	0.00%	443	2,671,280	667.82	521,839	10,402	4,763
	GTI	3,300	3,350	3,020	3,350	0.00	0.00%	1,064	3,249,670	812.42	134,000	1,671	516
22/12/20	PPAP	11,740	11,740	11,500	11,600	-140.00	▼1.19%	639	7,409,540	1,852.39	239,939	5,616	2,963
	PPSP	1,380	1,400	1,300	1,340	-10.00	▼0.86%	217,740	290,205,690	72,551.42	96,313	89,925	40,703
	PAS	14,160	14,160	13,900	13,900	-280.00	▼1.97%	462	6,479,120	1,619.78	1,192,230	6,360	1,920
	NEW	17,040	17,080	17,000	17,020	-20.00	▼0.11%	8,986	152,911,660	38,227.92	7,372,435	16,677	4,697
	PEPC	2,900	3,000	2,850	2,900	0.00	0.00%	2,469	7,137,650	1,784.41	217,341	5,536	2,004
	Index	651.10	651.10	645.83	646.83	-3.16	▼0.49%	158,303	356,692,040	89,173	9,810,390	99,597	88,013
	PPWSA	6,100	6,100	5,900	6,000	20.00	▲0.33%	1,076	6,444,820	1,611.21	521,839	8,493	3,945
21/12/20	GTI	3,350	3,400	3,350	3,350	-130.00	▼3.73%	230	771,500	192.88	134,000	10,949	957
	PPAP	11,800	11,900	11,400	11,740	-200.00	▼1.67%	3,995	45,744,280	11,436.07	242,834	3,769	2,661
	PPSP	1,440	1,440	1,310	1,350	0.00	0.00%	144,860	194,743,610	48,685.90	97,031	46,972	65,640
	PAS	14,000	14,180	14,000	14,180	0.00	0.00%	607	8,501,240	2,125.31	1,216,246	3,902	2,775
	ABC	17,100	17,100	17,040	17,040	-60.00	▼0.35%	5,538	94,505,920	23,626.48	7,381,098	11,455	10,307
	PEPC	3,100	3,100	2,900	2,900	-190.00	▼6.14%	1,997	5,980,670	1,495.17	217,341	14,057	1,728
	Index	655.46	655.56	646.15	649.99	-1.49	▼0.23%	89,369	264,420,170	66,105	9,858,216	104,980	118,394
18/12/20	PPWSA	6,200	6,200	5,980	5,980	0.00	0.00%	5,194	31,493,800	7,873.45	520,100	28,193	8,620
	GTI	3,540	3,540	3,100	3,480	90.00	▲2.65%	93	303,760	75.94	139,200	2,879	2,003
	PPAP	11,900	11,940	11,900	11,940	40.00	▲0.33%	39	464,500	116.13	246,971	3,005	4,793
	PPSP	1,350	1,430	1,310	1,350	40.00	▲3.05%	76,490	104,103,260	26,025.82	97,031	32,851	91,603
	PAS	14,200	14,200	14,180	14,180	120.00	▲0.85%	35	496,560	124.14	1,216,246	5,305	2,422
	ABC	17,240	17,240	17,000	17,100	-100.00	▼0.58%	7,483	127,450,140	31,862.54	7,407,088	21,607	6,138
	PEPC	3,090	3,090	3,090	3,090	40.00	▲1.31%	35	108,150	27.04	231,580	11,140	2,815
17/12/20	Index	647.30	652.37	645.43	651.48	4.18	▲1.10%	56,492	173,935,870	43,484	9,880,940	90,276	125,725
	PPWSA	5,900	6,100	5,880	5,980	100.00	▲1.70%	15,010	89,922,400	22,480.60	520,100	7,701	11,555
	GTI	3,490	3,490	3,390	3,390	90.00	▲2.72%	55	190,750	47.69	135,600	12,141	910
	PPAP	11,900	11,900	11,700	11,900	0.00	0.00%	286	3,354,600	838.65	246,144	2,934	14,764
	PPSP	1,350	1,350	1,290	1,310	-40.00	▼2.96%	39,062	51,397,180	12,849.30	94,156	26,975	79,469
	PAS	14,060	14,060	14,060	14,060	300.00	▲2.18%	37	520,220	130.06	1,205,954	3,244	4,074
	ABC	17,080	17,200	17,080	17,200	60.00	▲0.35%	1,592	27,265,760	6,816.44	7,450,404	12,361	8,298
	PEPC	3,090	3,090	2,750	3,050	30.00	▲0.99%	450	1,284,960	321.24	228,582	24,920	6,655
	Index	646.61	647.51	645.82	651.48	4.18	▲0.11%	79,951	149,829,550	37,457	9,817,548	94,891	80,519
	PPWSA	5,820	5,900	5,820	5,880	60.00	▲1.03%						

DISCLAIMER

ALL RESEARCH is based on material compiled from data considered to be reliable at the time of writing. However, information and opinions expressed will be subject to change at short notice, and no part of this report is to be construed as an offer or solicitation of an offer to transact any securities or financial instruments whether referred to herein or otherwise. We do not accept any liability directly or indirectly that may arise from investment decision-making based on this report. The company, its directors, officers, employees and/or connected persons may periodically hold an interest in the securities mentioned.

All Rights Reserved. No part of this publication may be used or re-produced without expressed permission from **ACLEDA SECURITIES PLC.**

ACLEDA IN GROUP

ACLEDA BANK PLC.

HEADQUARTERS

61, Preah Monivong Blvd., Sangkat Srah Chork,
Khan Daun Penh, Phnom Penh, Kingdom of Cambodia.
P.O. Box: 1149
Tel: (855) 23 998 777 / 430 999
Fax: (855) 23 998 666 / 430 555
E-mail: acledabank@acledabank.com.kh
Website: www.acledabank.com.kh
SWIFT: ACLBKHP

ACLEDA BANK PLC.

CASH SETTLEMENT, SECURITIES REGISTRAR, SECURITIES TRANSFER, AND
PAYING AGENT

HEADQUARTERS

61, Preah Monivong Blvd., Sangkat Srah Chork,
Khan Daun Penh, Phnom Penh, Kingdom of Cambodia.
P.O. Box: 1149
Tel: (855) 23 998 777 / 430 999
Fax: (855) 23 998 666 / 430 555
E-mail: acledabank@acledabank.com.kh
Website: www.acledabank.com.kh
SWIFT: ACLBKHP

ACLEDA BANK LAO LTD.

HEADQUARTERS

#398, Corner of Dongpalane and Dongpaina Road, Unit 20,
Phonesavanh
Neua Village, Sisattanak District, Vientiane Capital, Lao PDR.
P.O. Box: 1555
Hotline :1800
Tel: +856 (0)21 264 994 / 264 998
Fax: +856 (0)21 264 995/ 219 228
E-mail: acledabank@acledabank.com.la
Website: www.acledabank.com.la
SWIFT: ACLBLALA

ACLEDA SECURITIES PLC.

HEADQUARTERS

5th Floor, ACLEDA Building
61, Preah Monivong Blvd., Sangkat Srah Chork,
Khan Daun Penh, Phnom Penh, Kingdom of Cambodia.
Tel: (855) 23 723 388 / 999 966 / 999 977
Email: acs.rep@acledasecurities.com.kh
Website: www.acledasecurities.com.kh

ACLEDA INSTITUTE OF BUSINESS

HEADQUARTERS

Address: #1397, Phnom Penh-Hanoi
Friendship Blvd., Phum Anlong Kngan, Sangkat Khmuonh, Khan
Saensokh, Phnom Penh, Kingdom of Cambodia
P. O. Box: 1149
Tel: + 855 (0)23 881 790 / 999 944
E-mail: info@acleda-aib.edu.kh
Website: www.acleda-aib.edu.kh

ACLEDA MFI MYANMAR CO., LTD.

HEADQUARTERS

#186(B), ShweGonTaing Road, Yae Tar Shae Block,
Bahan Township, Yangon Region,
The Republic of the Union of Myanmar.
Tel: (+95-1) 559 475 / 552 956
Website: www.acledamfi.com.mm